

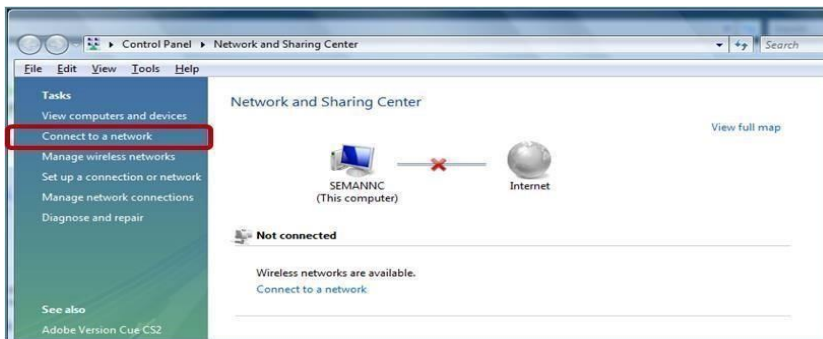
CCAC Wireless Access – Windows Vista

You may follow these instructions to configure CCACwireless on a device using Windows Vista.

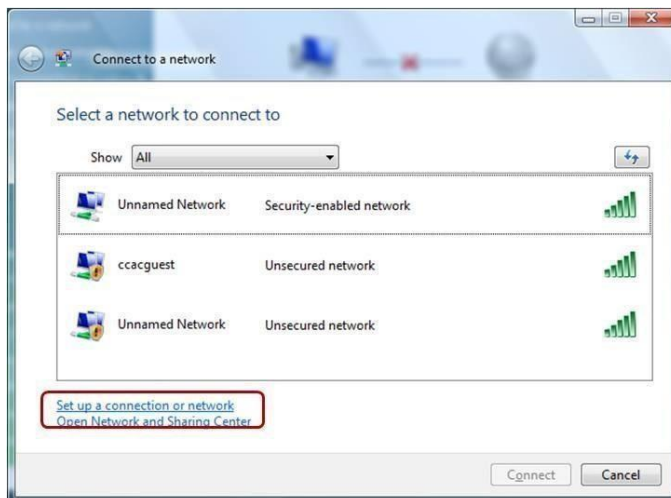
(Please note: The Windows Vista operating system has been declared end of life. The documentation and support will be provided on a best effort basis.)

Manually Configure CCACwireless

1. Click Start, go to Control Panel. Double-click the **Network Connections** icon.
2. Double-click the **Network and Sharing Center** icon.
3. On the left hand side of the window pane, under “Tasks”, click the “**Connect to a network**”



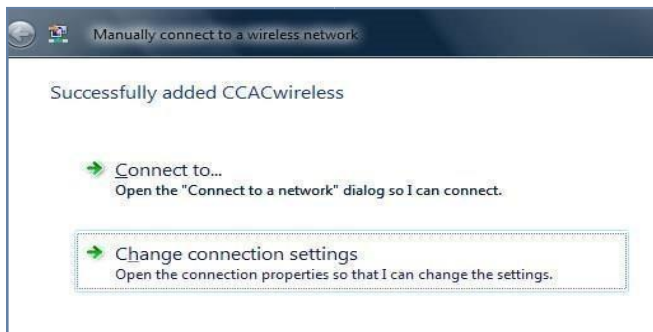
4. On the next window click on the “**Set up a connection or network**” link. Choose “**Manually connect to a wireless network...**” and click “Next”.



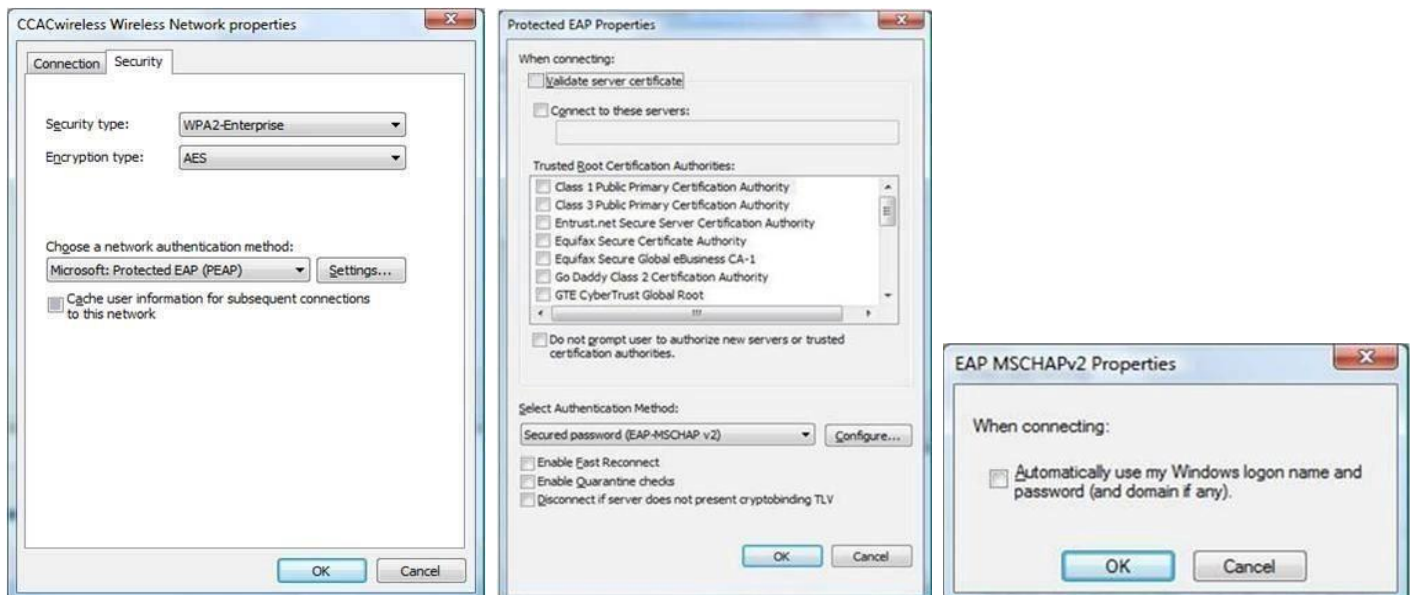
5. In this window enter **CCACwireless** for the “Network name:” choose **WPA2-Enterprise** for the “Security type:” and choose **AES** for the “Encryption type:” Check both boxes next to “**Start this connection automatically**” and “**Connect even if the network is not broadcasting**” then click the **Next** button.



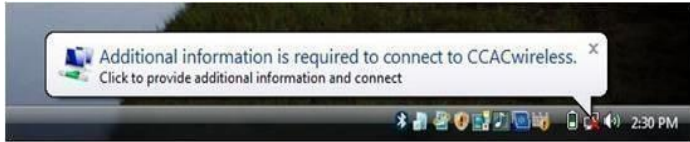
6. The message “**Successfully added CCACwireless**” will display. Click on “**Change connection settings**”.



7. On this properties window uncheck “**Connect to a more preferred network if available**” then click the **Security** tab. Choose **WPA2-Enterprise** from the drop down menu for “Security type:” and **AES** for the “Encryption type:” **Uncheck** “Cache user information for subsequent connections to this network” and then click on the **Settings** button. **Uncheck** “Validate server certificate” and “Enable Fast Reconnect”; click **Configure**. **Uncheck** the box “Automatically use my Windows logon name and password”.



8. Click on the bubble that popped up stating “**Additional information is required to connect to CCACwireless**”. Enter your Network username and password in the Enter Credentials window.
You now have secure wireless access!



About CCACwireless:

ITS strongly recommends that CCAC community members (students, faculty and staff) use this secure level of access. CCACwireless uses strong encryption that serves to protect your information from unauthorized interception and viewing.

Disconnect from wireless before leaving area.

CAUTION: ITS still recommends caution with transmitting personal and financial data over a wireless network.